

---

ku‘ualoha ho‘omanawanui

Pele’s Spirit finds Lohi‘au

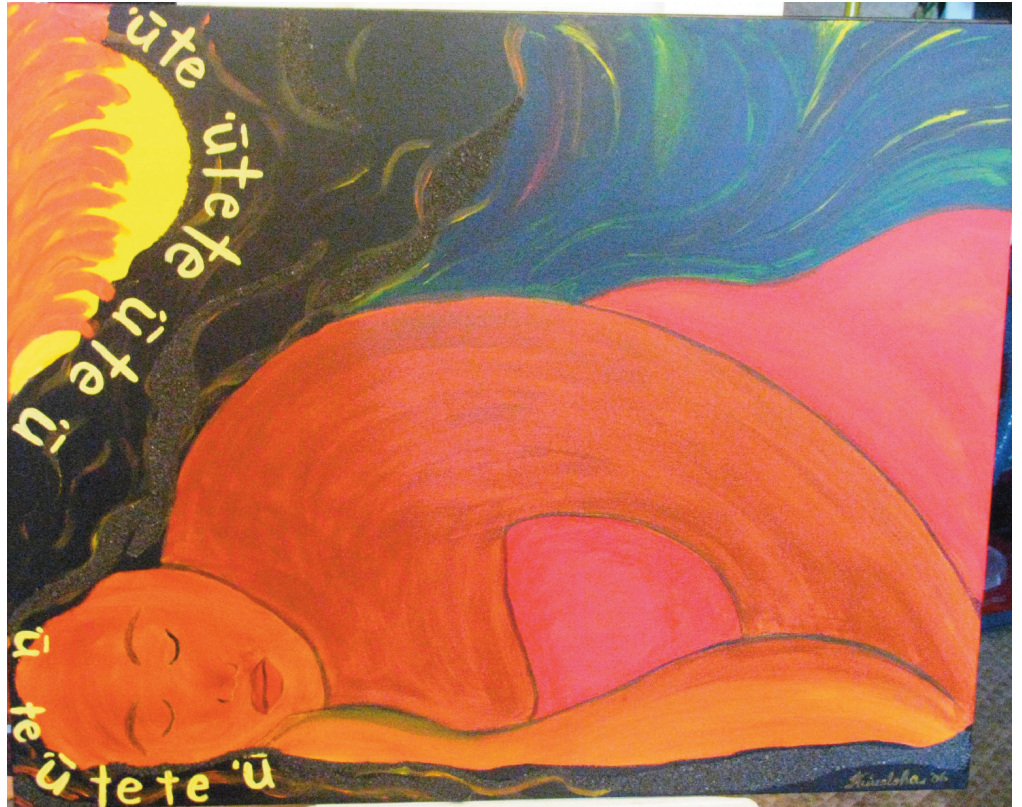


Fig. 1 : ku‘ualoha ho‘omanawanui, *Pele’s Spirit finds Lohi‘au*, 2007, Acrylic on canvas, 24 x 18 inch., courtesy of the artist.

Pele sleeping is called “Pele’s Spirit finds Lohi‘au”. In the epic of Pele and Hi‘iaka, Pele wraps herself in a cloak (‘ahu) of kapa cloth at Kapa‘ahu, Hawai‘i. Her spirit hears drums sounding, ‘ū tē, ‘ū tē tē, and follows the sound across the archipelago to the island of Kaua‘i, where she meets Lohi‘au, the handsome chief of Hā‘ena, who is hosting a hula festival.