

TeMA

Journal of
Land Use, Mobility and Environment

This special issue collects a selection of peer-review papers presented at the 8th International Conference INPUT 2014 titled "Smart City: planning for energy, transportation and sustainability of urban systems", held on 4-6 June in Naples, Italy. The issue includes recent developments on the theme of relationship between innovation and city management and planning.

Tema is the Journal of Land use, Mobility and Environment and offers papers with a unified approach to planning and mobility. TeMA Journal has also received the Sparc Europe Seal of Open Access Journals released by Scholarly Publishing and Academic Resources Coalition (SPARC Europe) and the Directory of Open Access Journals (DOAJ).

INPUT 2014

papers selected

Smart City

planning for energy, transportation
and sustainability of the urban system

SMART CITY

PLANNING FOR ENERGY, TRANSPORTATION AND SUSTAINABILITY OF THE URBAN SYSTEM

Special Issue, June 2014

Published by

Laboratory of Land Use Mobility and Environment
DICEA - Department of Civil, Architectural and Environmental Engineering
University of Naples "Federico II"

TeMA is realised by CAB - Center for Libraries at "Federico II" University of Naples using Open Journal System

Editor-in-chief: Rocco Papa
print ISSN 1970-9889 | on line ISSN 1970-9870
Lycence: Cancelleria del Tribunale di Napoli, n° 6 of 29/01/2008

Editorial correspondence

Laboratory of Land Use Mobility and Environment
DICEA - Department of Civil, Architectural and Environmental Engineering
University of Naples "Federico II"
Piazzale Tecchio, 80
80125 Naples
web: www.tema.unina.it
e-mail: redazione.tema@unina.it

TeMA

Journal of
Land Use, Mobility and
Environment

TeMA. Journal of Land Use, Mobility and Environment offers researches, applications and contributions with a unified approach to planning and mobility and publishes original inter-disciplinary papers on the interaction of transport, land use and environment. Domains include engineering, planning, modeling, behavior, economics, geography, regional science, sociology, architecture and design, network science, and complex systems.

The Italian National Agency for the Evaluation of Universities and Research Institutes (ANVUR) classified TeMA as scientific journals in the Areas 08. TeMA has also received the Sparc Europe Seal for Open Access Journals released by Scholarly Publishing and Academic Resources Coalition (SPARC Europe) and the Directory of Open Access Journals (DOAJ). TeMA is published under a Creative Commons Attribution 3.0 License and is blind peer reviewed at least by two referees selected among high-profile scientists by their competences. TeMA has been published since 2007 and is indexed in the main bibliographical databases and it is present in the catalogues of hundreds of academic and research libraries worldwide.

EDITOR- IN-CHIEF

Rocco Papa, Università degli Studi di Napoli Federico II, Italy

EDITORIAL ADVISORY BOARD

Luca Bertolini, Universiteit van Amsterdam, Netherlands

Virgilio Bettini, Università luav di Venezia, Italy

Dino Borri, Politecnico di Bari, Italy

Enrique Calderon, Universidad Politécnica de Madrid, Spain

Roberto Camagni, Politecnico di Milano, Italy

Robert Leonardi, London School of Economics and Political Science, United Kingdom

Raffaella Nanetti, College of Urban Planning and Public Affairs, United States

Agostino Nuzzolo, Università degli Studi di Roma Tor Vergata, Italy

Rocco Papa, Università degli Studi di Napoli Federico II, Italy

EDITORS

Agostino Nuzzolo, Università degli Studi di Roma Tor Vergata, Italy

Enrique Calderon, Universidad Politécnica de Madrid, Spain

Luca Bertolini, Universiteit van Amsterdam, Netherlands

Romano Fistola, Dept. of Engineering - University of Sannio - Italy, Italy

Adriana Galderisi, Università degli Studi di Napoli Federico II, Italy

Carmela Gargiulo, Università degli Studi di Napoli Federico II, Italy

Giuseppe Mazzeo, CNR - Istituto per gli Studi sulle Società del Mediterraneo, Italy

EDITORIAL SECRETARY

Rosaria Battarra, CNR - Istituto per gli Studi sulle Società del Mediterraneo, Italy

Andrea Ceudech, TeMALab, Università degli Studi di Napoli Federico II, Italy

Rosa Anna La Rocca, TeMALab, Università degli Studi di Napoli Federico II, Italy

Enrica Papa, University of Amsterdam, Netherlands

TeMA

Journal of
Land Use, Mobility and
Environment

This special issue of TeMA collects the papers presented at the 8th International Conference INPUT 2014 which will take place in Naples from 4th to 6th June. The Conference focuses on one of the central topics within the urban studies debate and combines, in a new perspective, researches concerning the relationship between innovation and management of city changing.



CONFERENCE COMMITTEE

Dino Borri, Polytechnic University of Bari, Italy
Arnaldo Cecchini, University of Sassari, Italy
Romano Fistola, University of Sannio, Italy
Lilli Gargiulo, University of Naples Federico II, Italy
Giuseppe B. Las Casas, University of Basilicata, Italy
Agostino Nuzzolo, University of Rome, Italy
Rocco Papa, University of Naples Federico II, Italy
Giovanni Rabino, Polytechnic University of Milan, Italy
Maurizio Tira, University of Brescia, Italy
Corrado Zoppi, University of Cagliari, Italy

SCIENTIFIC COMMITTEE

Emanuela Abis, University of Cagliari, Italy
Nicola Bellini, Institute of Management, Scuola Superiore Sant'Anna Pisa, Italy
Mariolina Besio Dominici, University of Genoa, Italy
Ivan Blečić, University of Sassari, Italy
Dino Borri, Polytechnic University of Bari, Italy
Grazia Brunetta, Polytechnic University of Turin, Italy
Roberto Busi, University of Brescia, Italy
Domenico Camarda, Polytechnic University of Bari, Italy
Michele Campagna, University of Cagliari, Italy
Arnaldo Cecchini, University of Sassari, Italy
Donatella Cialdea, University of Molise, Italy
Valerio Cutini, University of Pisa, Italy, Italy
Luciano De Bonis, University of Molise, Italy
Andrea De Montis, University of Sassari, Italy
Filippo de Rossi, University of Sannio (Dean of the University of Sannio), Italy
Lidia Diappi, Polytechnic University of Milan, Italy
Isidoro Fasolino, University of Salerno, Italy
Mariano Gallo, University of Sannio, Italy
Lilli Gargiulo, University of Naples Federico II, Italy
Roberto Gerundo, University of Salerno, Italy
Paolo La Greca, University of Catania, Italy
Giuseppe B. Las Casas, University of Basilicata, Italy
Robert Laurini, University of Lyon, France
Antonio Leone, Tuscia University, Italy
Anna Loffredo, Institute of Management, Scuola Superiore Sant'Anna Pisa, Italy
Silvana Lombardo, University of Pisa, Italy
Giovanni Maciocco, University of Sassari, Italy
Giulio Maternini, University of Brescia, Italy

Francesco Domenico Moccia, University of Naples Federico II, Italy
Bruno Montella, University of Naples "Federico II" (Director of DICEA), Italy
Beniamino Murgante, University of Basilicata, Italy
Agostino Nuzzolo, University of Rome, Italy
Sylvie Occelli, IRES Turin, Italy
Rocco Papa, University of Naples Federico II, Italy
Maria Paradiso, University of Sannio, Italy
Domenico Patassini, IUAV, Venice, Italy
Michele Pezzagno, University of Brescia, Italy
Fulvia Pinto, Polytechnic University of Milan, Italy
Giovanni Rabino, Polytechnic University of Milan, Italy
Giuseppe Roccasalva, Polytechnic University of Turin, Italy
Bernardino Romano, University of L'Aquila, Italy
Francesco Russo, Mediterranean University Reggio Calabria, Italy
Michelangelo Russo, University of Naples Federico II, Italy
Ferdinando Semboloni, University of Firenze, Italy
Agata Spaziante, Polytechnic University of Turin, Italy
Michela Tiboni, University of Brescia, Italy
Maurizio Tira, University of Brescia, Italy
Simona Tondelli, University of Bologna, Italy
Umberto Villano, University of Sannio (Director of DING), Italy
Ignazio Vinci, University of Palermo, Italy
Corrado Zoppi, University of Cagliari, Italy

LOCAL SCIENTIFIC COMMITTEE

Rosaria Battarra, ISSM, National Research Council, Italy
Romano Fistola, DING, University of Sannio, Italy
Lilli Gargiulo, DICEA, University of Naples Federico II, Italy
Adriana Galderisi, DICEA, University of Naples Federico II, Italy
Rosa Anna La Rocca, DICEA, University of Naples Federico II, Italy
Giuseppe Mazzeo, ISSM, National Research Council, Italy
Enrica Papa, University of Amsterdam, Netherlands

LOCAL ADMINISTRATIVE TEAM

Gennaro Angiello, TeMA Lab, University of Naples Federico II, Italy
Gerardo Carpentieri, TeMA Lab, University of Naples Federico II, Italy
Stefano Franco, TeMA Lab, University of Naples Federico II, Italy
Laura Russo, TeMA Lab, University of Naples Federico II, Italy
Floriana Zucaro, TeMA Lab, University of Naples Federico II, Italy

EIGHTH INTERNATIONAL CONFERENCE INPUT 2014

SMART CITY. PLANNING FOR ENERGY, TRANSPORTATION AND SUSTAINABILITY OF THE URBAN SYSTEM

This special issue of TeMA collects the papers presented at the Eighth International Conference INPUT, 2014, titled "Smart City. Planning for energy, transportation and sustainability of the urban system" that takes place in Naples from 4 to 6 of June 2014.

INPUT (Innovation in Urban Planning and Territorial) consists of an informal group/network of academic researchers Italians and foreigners working in several areas related to urban and territorial planning. Starting from the first conference, held in Venice in 1999, INPUT has represented an opportunity to reflect on the use of Information and Communication Technologies (ICTs) as key planning support tools. The theme of the eighth conference focuses on one of the most topical debate of urban studies that combines , in a new perspective, researches concerning the relationship between innovation (technological, methodological, of process etc..) and the management of the changes of the city. The Smart City is also currently the most investigated subject by TeMA that with this number is intended to provide a broad overview of the research activities currently in place in Italy and a number of European countries. Naples, with its tradition of studies in this particular research field, represents the best place to review progress on what is being done and try to identify some structural elements of a planning approach.

Furthermore the conference has represented the ideal space of mind comparison and ideas exchanging about a number of topics like: planning support systems, models to geo-design, qualitative cognitive models and formal ontologies, smart mobility and urban transport, Visualization and spatial perception in urban planning innovative processes for urban regeneration, smart city and smart citizen, the Smart Energy Master project, urban entropy and evaluation in urban planning, etc..

The conference INPUT Naples 2014 were sent 84 papers, through a computerized procedure using the website www.input2014.it . The papers were subjected to a series of monitoring and control operations. The first fundamental phase saw the submission of the papers to reviewers. To enable a blind procedure the papers have been checked in advance, in order to eliminate any reference to the authors. The review was carried out on a form set up by the local scientific committee. The review forms received were sent to the authors who have adapted the papers, in a more or less extensive way, on the base of the received comments. At this point (third stage), the new version of the paper was subjected to control for to standardize the content to the layout required for the publication within TeMA. In parallel, the Local Scientific Committee, along with the Editorial Board of the magazine, has provided to the technical operation on the site TeMA (insertion of data for the indexing and insertion of pdf version of the papers). In the light of the time's shortness and of the high number of contributions the Local Scientific Committee decided to publish the papers by applying some simplifies compared with the normal procedures used by TeMA. Specifically:

- Each paper was equipped with cover, TeMA Editorial Advisory Board, INPUT Scientific Committee, introductory page of INPUT 2014 and summary;
- Summary and sorting of the papers are in alphabetical order, based on the surname of the first author;
- Each paper is indexed with own DOI codex which can be found in the electronic version on TeMA website (www.tema.unina.it). The codex is not present on the pdf version of the papers.

SMART CITY PLANNING FOR ENERGY, TRANSPORTATION AND SUSTAINABILITY OF THE URBAN SYSTEM Special Issue, June 2014

Contents

- 1. The Plan in Addressing the Post Shock Conflicts 2009-2014.
A First Balance Sheet of the Reconstruction of L'Aquila** 1-13
Fabio Andreassi, Pierluigi Properzi
- 2. Assessment on the Expansion of Basic Sanitation Infrastructure.
In the Metropolitan Area of Belo Horizonte - 2000/2010** 15-26
Grazielle Anjos Carvalho
- 3. Temporary Dwelling of Social Housing in Turin.
New Responses to Housing Discomfort** 27-37
Giulia Baù, Luisa Ingaramo
- 4. Smart Communities. Social Innovation at the Service of the Smart Cities** 39-51
Massimiliano Bencardino, Ilaria Greco
- 5. Online Citizen Reporting on Urban Maintenance:
A Collection, Evaluation and Decision Support System** 53-63
Ivan Blečić, Dario Canu, Arnaldo Cecchini, Giuseppe Andrea Trunfio
- 6. Walkability Explorer. An Evaluation and Design Support Tool for Walkability** 65-76
Ivan Blečić, Arnaldo Cecchini, Tanja Congiu, Giovanna Fancello, Giuseppe Andrea Trunfio
- 7. Diachronic Analysis of Parking Usage: The Case Study of Brescia** 77-85
Riccardo Bonotti, Silvia Rossetti, Michela Tiboni, Maurizio Tira
- 8. Crowdsourcing. A Citizen Participation Challenge** 87-96
Júnia Borges, Camila Zyngier
- 9. Spatial Perception and Cognition Review.
Considering Geotechnologies as Urban Planning Strategy** 97-108
Júnia Borges, Camila Zyngier, Karen Lourenço, Jonatha Santos

- 10. Dilemmas in the Analysis of Technological Change. A Cognitive Approach to Understand Innovation and Change in the Water Sector** 109-127
Dino Borri, Laura Grassini
- 11. Learning and Sharing Technology in Informal Contexts. A Multiagent-Based Ontological Approach** 129-140
Dino Borri, Domenico Camarda, Laura Grassini, Mauro Patano
- 12. Smartness and Italian Cities. A Cluster Analysis** 141-152
Flavio Boscacci, Ila Maltese, Ilaria Mariotti
- 13. Beyond Defining the Smart City. Meeting Top-Down and Bottom-Up Approaches in the Middle** 153-164
Jonas Breuer, Nils Walravens, Pieter Ballon
- 14. Resilience Through Ecological Network** 165-173
Grazia Brunetta, Angioletta Voghera
- 15. ITS System to Manage Parking Supply: Considerations on Application to the “Ring” in the City of Brescia** 175-186
Susanna Bulferetti, Francesca Ferrari, Stefano Riccardi
- 16. Formal Ontologies and Uncertainty. In Geographical Knowledge** 187-198
Matteo Caglioni, Giovanni Fusco
- 17. Geodesign From Theory to Practice: In the Search for Geodesign Principles in Italian Planning Regulations** 199-210
Michele Campagna, Elisabetta Anna Di Cesare
- 18. Geodesign from Theory to Practice: From Metaplanning to 2nd Generation of Planning Support Systems** 211-221
Michele Campagna
- 19. The Energy Networks Landscape. Impacts on Rural Land in the Molise Region** 223-234
Donatella Cialdea, Alessandra Maccarone
- 20. Marginality Phenomena and New Uses on the Agricultural Land. Diachronic and Spatial Analyses of the Molise Coastal Area** 235-245
Donatella Cialdea, Luigi Mastronardi
- 21. Spatial Analysis of Urban Squares. ‘Siccome Umbellico al corpo dell’uomo’** 247-258
Valerio Cutini

- 22. Co-Creative, Re-Generative Smart Cities.
Smart Cities and Planning in a Living Lab Perspective 2** **259-270**
Luciano De Bonis, Grazia Concilio, Eugenio Leanza, Jesse Marsh, Ferdinando Trapani
- 23. The Model of Voronoi's Polygons and Density:
Diagnosis of Spatial Distribution of Education Services of EJA
in Divinópolis, Minas Gerais, Brazil** **271-283**
Diogo De Castro Guadalupe, Ana Clara Mourão Moura
- 24. Rural Architectural Intensification: A Multidisciplinary Planning Tool** **285-295**
Roberto De Lotto, Tiziano Cattaneo, Cecilia Morelli Di Popolo, Sara Morettini,
Susanna Sturla, Elisabetta Venco
- 25. Landscape Planning and Ecological Networks.
Part A. A Rural System in Nuoro, Sardinia** **297-307**
Andrea De Montis, Maria Antonietta Bardi, Amedeo Ganciu, Antonio Ledda,
Simone Caschili, Maurizio Mulas, Leonarda Dessena, Giuseppe Modica,
Luigi Laudari, Carmelo Riccardo Fichera
- 26. Landscape Planning and Ecological Networks.
Part B. A Rural System in Nuoro, Sardinia** **309-320**
Andrea De Montis, Maria Antonietta Bardi, Amedeo Ganciu, Antonio Ledda,
Simone Caschili, Maurizio Mulas, Leonarda Dessena, Giuseppe Modica,
Luigi Laudari, Carmelo Riccardo Fichera
- 27. Sea Guidelines. A Comparative Analysis: First Outcomes** **321-330**
Andrea De Montis, Antonio Ledda, Simone Caschili, Amedeo Ganciu, Mario Barra,
Gianluca Cocco, Agnese Marcus
- 28. Energy And Environment in Urban Regeneration.
Studies for a Method of Analysis of Urban Periphery** **331-339**
Paolo De Pascali, Valentina Alberti, Daniela De Ioris, Michele Reginaldi
- 29. Achieving Smart Energy Planning Objectives.
The Approach of the Transform Project** **341-351**
Ilaria Delponte
- 30. From a Smart City to a Smart Up-Country.
The New City-Territory of L'Aquila** **353-364**
Donato Di Ludovico, Pierluigi Properzi, Fabio Graziosi
- 31. Geovisualization Tool on Urban Quality.
Interactive Tool for Urban Planning** **365-375**
Enrico Eynard, Marco Santangelo, Matteo Tabasso

- 32. Visual Impact in the Urban Environment.
The Case of Out-of-Scale Buildings** 377-388
Enrico Fabrizio, Gabriele Garnerò
- 33. Smart Dialogue for Smart Citizens:
Assertive Approaches for Strategic Planning** 389-401
Isidoro Fasolino, Maria Veronica Izzo
- 34. Digital Social Networks and Urban Spaces** 403-415
Pablo Vieira Florentino, Maria Célia Furtado Rocha, Gilberto Corso Pereira
- 35. Social Media Geographic Information in Tourism Planning** 417-430
Roberta Floris, Michele Campagna
- 36. Re-Use/Re-Cycle Territories:
A Retroactive Conceptualisation for East Naples** 431-440
Enrico Formato, Michelangelo Russo
- 37. Urban Land Uses and Smart Mobility** 441-452
Mauro Francini, Annunziata Palermo, Maria Francesca Viapiana
- 38. The Design of Signalised Intersections at Area Level.
Models and Methods** 453-464
Mariano Gallo, Giuseppina De Luca, Luca D'acierno
- 39. Piano dei Servizi. Proposal for Contents and Guidelines** 465-476
Roberto Gerundo, Gabriella Graziuso
- 40. Social Housing in Urban Regeneration.
Regeneration Heritage Existing Building: Methods and Strategies** 477-486
Maria Antonia Giannino, Ferdinando Orabona
- 41. Using GIS to Record and Analyse Historical Urban Areas** 487-497
Maria Giannopoulou, Athanasios P. Vavatsikos,
Konstantinos Lykostratis, Anastasia Roukouni
- 42. Network Screening for Smarter Road Sites: A Regional Case** 499-509
Attila Grieco, Chiara Montaldo, Sylvie Ocelli, Silvia Tarditi
- 43. Li-Fi for a Digital Urban Infrastructure:
A Novel Technology for the Smart City** 511-522
Corrado Iannucci, Fabrizio Pini
- 44. Open Spaces and Urban Ecosystem Services.
Cooling Effect towards Urban Planning in South American Cities** 523-534
Luis Inostroza

- 45. From RLP to SLP: Two Different Approaches to Landscape Planning** 535-543
Federica Isola, Cheti Pira
- 46. Revitalization and its Impact on Public. Space Organization A Case Study of Manchester in UK, Lyon in France and Łódź in Poland** 545-556
Jaroslaw Kazimierzak
- 47. Geodesign for Urban Ecosystem Services** 557-565
Daniele La Rosa
- 48. An Ontology of Implementation Plans of Historic Centers: A Case Study Concerning Sardinia, Italy** 567-579
Sabrina Lai, Corrado Zoppi
- 49. Open Data for Territorial Specialization Assessment. Territorial Specialization in Attracting Local Development Funds: an Assessment. Procedure Based on Open Data and Open Tools** 581-595
Giuseppe Las Casas, Silvana Lombardo, Beniamino Murgante, Piergiuseppe Pontrandolfi, Francesco Scorza
- 50. Sustainability And Planning. Thinking and Acting According to Thermodynamics Laws** 597-606
Antonio Leone, Federica Gobattoni, Raffaele Pelorosso
- 51. Strategic Planning of Municipal Historic Centers. A Case Study Concerning Sardinia, Italy** 607-619
Federica Leone, Corrado Zoppi
- 52. A GIS Approach to Supporting Nightlife Impact Management: The Case of Milan** 621-632
Giorgio Limonta
- 53. Dealing with Resilience Conceptualisation. Formal Ontologies as a Tool for Implementation of Intelligent Geographic Information Systems** 633-644
Giampiero Lombardini
- 54. Social Media Geographic Information: Recent Findings and Opportunities for Smart Spatial Planning** 645-658
Pierangelo Massa, Michele Campagna
- 55. Zero Emission Mobility Systems in Cities. Inductive Recharge System Planning in Urban Areas** 659-669
Giulio Maternini, Stefano Riccardi, Margherita Cadei

- 56. Urban Labelling: Resilience and Vulnerability as Key Concepts for a Sustainable Planning** 671-682
Giuseppe Mazzeo
- 57. Defining Smart City. A Conceptual Framework Based on Keyword Analysis** 683-694
Farnaz Mosannenzadeh, Daniele Vettorato
- 58. Parametric Modeling of Urban Landscape: Decoding the Brasilia of Lucio Costa from Modernism to Present Days** 695-708
Ana Clara Moura, Suellen Ribeiro, Isadora Correa, Bruno Braga
- 59. Smart Mediterranean Logics. Old-New Dimensions and Transformations of Territories and Cites-Ports in Mediterranean** 709-718
Emanuela Nan
- 60. Mapping Smart Regions. An Exploratory Approach** 719-728
Sylvie Occelli, Alessandro Sciuillo
- 61. Planning Un-Sustainable Development of Mezzogiorno. Methods and Strategies for Planning Human Sustainable Development** 729-736
Ferdinando Orabona, Maria Antonia Giannino
- 62. The Factors Influencing Transport Energy Consumption in Urban Areas: a Review** 737-747
Rocco Papa, Carmela Gargiulo, Gennaro Angiello
- 63. Integrated Urban System and Energy Consumption Model: Residential Buildings** 749-758
Rocco Papa, Carmela Gargiulo, Gerardo Carpentieri
- 64. Integrated Urban System and Energy Consumption Model: Public and Singular Buildings** 759-770
Rocco Papa, Carmela Gargiulo, Mario Cristiano
- 65. Urban Smartness Vs Urban Competitiveness: A Comparison of Italian Cities Rankings** 771-782
Rocco Papa, Carmela Gargiulo, Stefano Franco, Laura Russo
- 66. Urban Systems and Energy Consumptions: A Critical Approach** 783-792
Rocco Papa, Carmela Gargiulo, Floriana Zucaro
- 67. Climate Change and Energy Sustainability. Which Innovations in European Strategies and Plans** 793-804
Rocco Papa, Carmela Gargiulo, Floriana Zucaro

- 68. Bio-Energy Connectivity And Ecosystem Services.
An Assessment by Pandora 3.0 Model for Land Use Decision Making** 805-816
Raffaele Pelorosso, Federica Gobattoni, Francesco Geri,
Roberto Monaco, Antonio Leone
- 69. Entropy and the City. GHG Emissions Inventory:
a Common Baseline for the Design of Urban and Industrial Ecologies** 817-828
Michele Pezzagno, Marco Rosini
- 70. Urban Planning and Climate Change: Adaptation and Mitigation Strategies** 829-840
Fulvia Pinto
- 71. Urban Gaming Simulation for Enhancing Disaster Resilience.
A Social Learning Tool for Modern Disaster Risk Management** 841-851
Sarunwit Promsaka Na Sakonnakron, Pongpisit Huyakorn, Paola Rizzi
- 72. Visualisation as a Model. Overview on Communication Techniques
in Transport and Urban Planning** 853-862
Giovanni Rabino, Elena Masala
- 73. Ontologies and Methods of Qualitative Research in Urban Planning** 863-869
Giovanni Rabino
- 74. City/Sea Searching for a New Connection.
Regeneration Proposal for Naples Waterfront Like an Harbourscape:
Comparing Three Case Studies** 871-882
Michelangelo Russo, Enrico Formato
- 75. Sensitivity Assessment. Localization of Road Transport Infrastructures
in the Province of Lucca** 883-895
Luisa Santini, Serena Pecori
- 76. Creating Smart Urban Landscapes.
A Multimedia Platform for Placemaking** 897-907
Marichela Sepe
- 77. Virtual Power Plant. Environmental Technology Management Tools
of The Settlement Processes** 909-920
Maurizio Sibilla
- 78. Ecosystem Services and Border Regions.
Case Study from Czech – Polish Borderland** 921-932
Marcin Spyra
- 79. The Creative Side of the Reflective Planner. Updating the Schön's Findings** 933-940
Maria Rosaria Stufano Melone, Giovanni Rabino

- 80. Achieving People Friendly Accessibility.
Key Concepts and a Case Study Overview** 941-951
Michela Tiboni, Silvia Rossetti
- 81. Planning Pharmacies: An Operational Method to Find the Best Location** 953-963
Simona Tondelli, Stefano Fatone
- 82. Transportation Infrastructure Impacts Evaluation:
The Case of Egnatia Motorway in Greece** 965-975
Athanasios P. Vavatsikos, Maria Giannopoulou
- 83. Designing Mobility in a City in Transition.
Challenges from the Case of Palermo** 977-988
Ignazio Vinci, Salvatore Di Dio
- 84. Considerations on the Use of Visual Tools in Planning Processes:
A Brazilian Experience** 989-998
Camila Zyngier, Stefano Pensa, Elena Masala

TeMA

Journal of
Land Use, Mobility and Environment

TeMA INPUT 2014
Print ISSN 1970-9889, e- ISSN 1970-9870

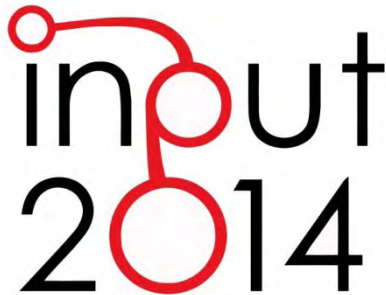
DOI available on the on-line version

Licensed under the Creative Commons Attribution
Non Commercial License 3.0
www.tema.unina.it

SPECIAL ISSUE

Eighth International Conference INPUT
Smart City - Planning for Energy, Transportation and Sustainability
of the Urban System

Naples, 4-6 June 2014

The logo for the INPUT 2014 conference. It features the word 'input' in a lowercase, sans-serif font, with the 'i' and 'n' connected by a red line that forms a circle. Below 'input' is the year '2014', where the '0' is a large red circle. The entire logo is rendered in black and red.

MARGINALITY PHENOMENA AND NEW USES ON THE AGRICULTURAL LAND

DIACHRONIC AND SPATIAL ANALYSES OF THE MOLISE
COASTAL AREA

Donatella Cialdea^a, Luigi Mastronardi^b

^{a, b} University of Molise L.a.co.s.t.a. Laboratory
e-mail: ^a cialdea@unimol.it;
^b nardi@unimol.it

ABSTRACT

This paper analyzes the evolution of land use in the Molise Region. The attention is focused on the changes that occurred primarily on the rural area of the coastal area in this Region.

The presence of urban centers of limited dimension, both for the demographic performance and for the dimensional order, is the main characteristic of this area. The historic part of rural tradition, at the same time, no longer emerges as a primary component of the regional landscape. This trend is particularly evident in the coastal zone, which is analyzed in this work not only in the range of areas that directly bordering the Adriatic Sea, but also in its pre-coastal zone, which remains imprinted on a matrix rural, but suffering from marginalization phenomena

KEYWORDS

Rural Land, Marginality, Landscape, Agriculture

1 INTRODUCTION

The geographical area's marginality comes from a large number of demographic, social and economic causes, but it takes many configurations depending on the methodological approach.

From the demographic point of view, the Molise Region is characterized by the presence of small size municipalities with fewer than 5,000 inhabitants (125 out of 136 municipalities), which cover 82 % of the total area with the middle of the regional population (Figure 1): 105 towns have less than 2,000 inhabitants and extends over approximately 65% of the region, with almost 30% of the total population, while 88 municipalities that have less than 5,000 inhabitants and population density of less than 50 inhabitants/km² appear in strong condition of depopulation.

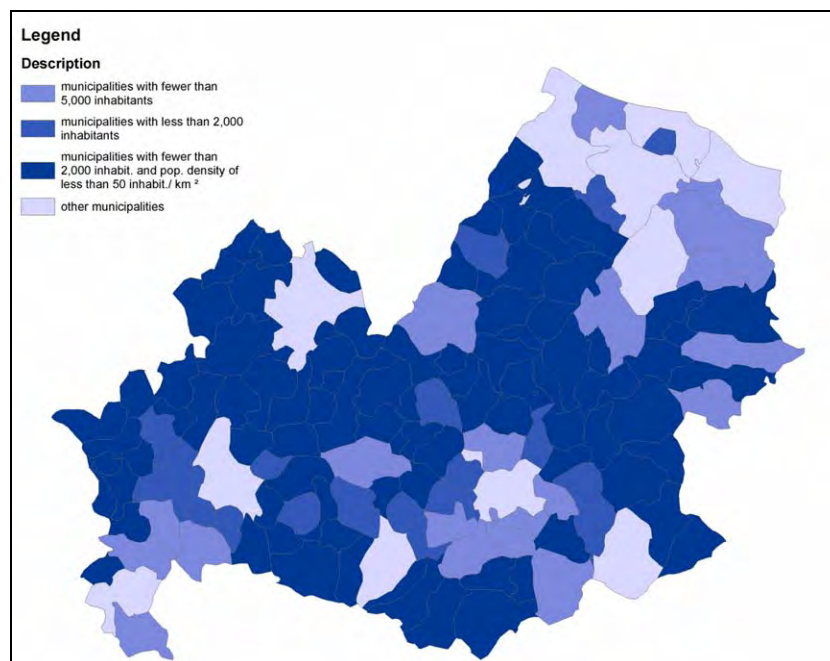


Fig. 1 Demographic Map of the Molise Region

2 THE MARGINALITY IN THE MOLISE REGION

In accordance with the OECD methodology (1994), which defines rural municipalities with population density below 150 inhabitants per square kilometer, almost all municipalities of the Molise Region (129 of 136) are classified as rural, while the provincial areas are "Predominantly rural".

The OECD methodology is mainly based on demographic criteria: however it is not able to grasp in a right way the regional marginality, which contains its own internal social and economic realities that are much more complex.

In fact the marginality condition in Molise is more articulate as well as highlighted in the past researches carried on Agricultural Land Italian Systems (Cannata 1989; Argiolas and Cannata 1980; Cannata and Forleo 1998) and on Rural Land Zoning (Molise Region 2007; Pistacchio 2008). These works take into account not only the demographic aspect, but also the physical aspect of the area, the productive structure of the agricultural sector, the relationship with other economic sectors, the condition of economic and social development .

In chronological terms, in the '80s Cannata and Argiolas identify in Molise eight Rural Systems with different levels of development. "Non-Agricultural and Attractive Systems" show a good condition and well-being: in these systems agriculture activity appears to be specialized in crops with high added value. "Integrated Farming and Attractive Systems", medium growth rate, have a good supply of urban services: their farming activity is specialized and integrated with the total economy. "Medium Autonomous Development Systems" have a condition of unbalanced development in relation to the services provision, to the quality of life and levels of consumption, despite the significant consistency of small industries, trade activities and production autonomy.

"Dependent Agricultural Development Systems" are devoid of autonomy in production and therefore depend on the most dynamic production activities: in this case municipalities are located in mountainous areas where there is a strong presence of forests and agriculture is the most significant activity. "Strong Exodus Marginal Systems" are also devoid of autonomous productive activities and agriculture does not appear to be competitive. "Ancient Depopulation Marginal Systems" show a clear situation of social and economic marginality: they are mountain areas with high incidence of wooded areas, with the agricultural use of the land in very big farms predominantly voted to livestock activities. "Medium Marginality Agricultural Systems" have a degraded economic and productive structure. "High Marginality Agricultural Systems" show situations very negative because of the presence of lower income levels, of high unemployment, of high incidence in the elderly population and of low levels of education.

At the end of the 90s, Fanelli (1998), using a broader set of indicators, identifies a new situation, different from that described above and characterized by six municipalities homogeneous groups. "Centers" have the characteristics of the medium-rich and urban areas, where agriculture is not the most important activity in terms of value added and employment. "The Lower Molise Area" is the zone characterized by a good economic development, where agriculture is competitive and highly productive, with high capital-intensive and specialized crop irrigation.

"The Inside Area Agriculture" is based on animal husbandry, that allows this system to reach higher levels of income and consumption enough, but in a social and productive context which doesn't get to production standards and demographic structures of the most dynamic areas. "The Mountain Agriculture" presents the strong delay in economic development, because of its non-competitive agriculture, connected to its state of territorial isolation with insufficient administrative services, as well as a significant rate of depopulation.

"Municipalities within Protected Areas", which are included in the National Park of Abruzzo, Lazio and Molise have a high tourist vocation, but at the same time they suffer a strong social and economic marginality due to remoteness from major centers in the region and the low productivity of natural resources.

"Municipalities based on Industrial Activities", characterized by non-agricultural development, are in good geographic location and have a good consistency of infrastructures.

In the "Molise Regional Rural Development Plan" (2007), two different typologies are identified: they are "Urban Centers" and "Rural Areas with Development Problems", which are divided into: a) Hilly Irrigated Areas; b) Hilly Rural Areas; c) Mountain Areas (Figure 2).

"Urban Centers" correspond to the most dynamic areas of the region with a good amount of services and good level of well-being; they are attributable to the two capitals of Campobasso and Isernia. "Hilly Irrigated Areas" include the coastal strip and the inland plain: despite their characterization by elements of fragility, they have some characters that are fundamentally different compared to other rural areas with development problems, particularly with regard to their competitiveness of the agricultural activities.

"Hilly Rural Areas" differ from the first one in relation to the reduced incidence of irrigated areas; this situation, also with their geo-morphological conditions, affects their agricultural production and, more

generally, on their economic balance. Moreover, they are characterized by strong elements of rurality, associated with lack of infrastructures and services that distinguish them significantly from other hilly areas. "Mountain Areas" correspond to the most marginal and peripheral areas of the region, in which geographic morphological and climatic features, influence in a negative way business decisions and consequently the levels of development of the territory.

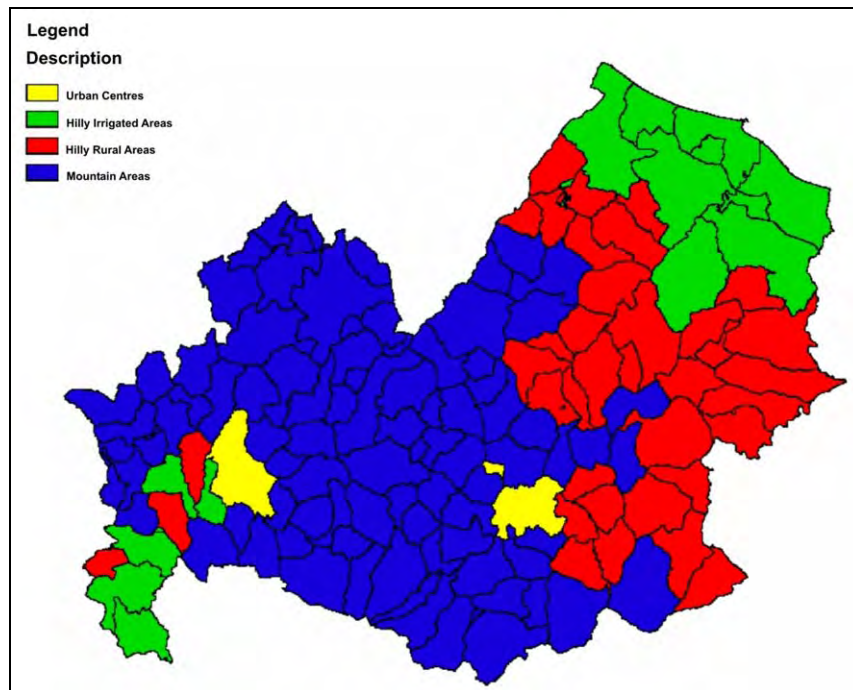


Fig. 2 Land Classification Map of the Molise Region

The result of a different zoning, performed recently by Pistacchio (2008), shows, finally, four clusters. They are: 1) "Marginal Area"; 2) "Urban Area"; 3) "Productive Area"; 4) "Medium Area". The "Marginal Area" has a low population density, a high index of old age and economic dependence, a low incidence of utilized agricultural area compared to the total utilization. The "Urban Area" is characterized by high population density and good services sector development. The "Productive Area" shows a significant use of agricultural area and a clear presence of competitive and specialized farms in irrigated crops, as well as a good percentage of employers in agriculture activities. The "Medium Area" is interposed between the Urban Area and Productive Area. It is precisely in these areas - identified as predominantly rural from regional investigations - that in recent years were made the most renewable energy installations (Cialdea, 2010 b). Our attention turns particularly to installations which have a more significant impact on the landscape - and inevitably affect the agricultural activities that take place on it - or wind power and ground-mounted photovoltaic plants (Figure 3).

3 THE TERRITORIAL SYSTEM OF THE COASTAL AREA

The coastal zone of the Molise Region is our sample area. It is a short coastline of about 35 km which presents, however, some different situations. First of all, it is characterized by the mouths of three rivers, the Trigno River, the Biferno River and the Saccione River, but there are many other strong elements.

However there are three ports, some already realized for a long time and others more recently existing.

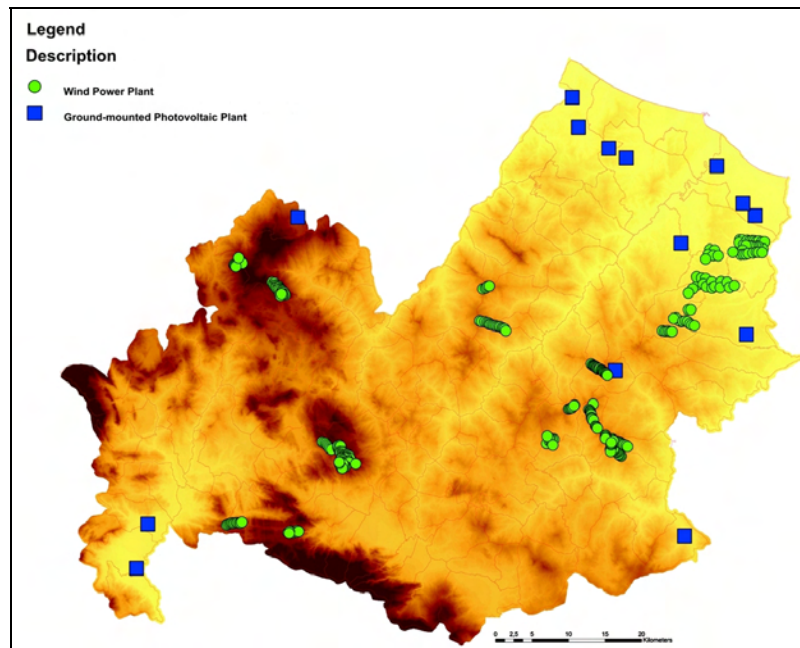


Fig. 3 Wind power and Ground-mounted Photovoltaic Plants in the Molise Region

For the Termoli harbor, built in 1905 (it was designed in 1890 but it was not then authorized), successive new extensions undergone; in Campomarino the port, though not completely, was recently realized, even in Montenero di Bisaccia there is a new port, on which there were in many debates.

There is, then, the strong presence of the industrial area, the largest and most started in the region, which is stationed near the town of Termoli.

In this area, finally, significant remediation of wetlands were made from the late 50s, which have changed the aspect and the land use of most of the coastal and pre-coastal zone (Cialdea 2009). The coastal area is covered by the *Landscape Plan No. 1 Coastal Area*, for a total of 48 434 hectares¹, and it is, of course, never returned to any Mountain Community.

Moreover, in the last fifty years there were considerable changes in land use (Cialdea et al. 2006, 2007a, b). First of all, there was a net decrease in areas with shrubs and bushes that it turns into an agricultural area. Only in few circumstances, where agriculture activities appeared uncomfortable because of the area's topography, agricultural zones were abandoned: consequently these areas have slowly naturalized (this is the case of the wooded areas along the Tecchio River, near Petacciato, which before were devoted to agricultural uses).

A Campomarino, however, we see the opposite phenomenon: in Ramitelli locality, forest areas disappeared to take place for agricultural use.

Another growing problem is the disappearance of the dune system: on the coast of Molise today do not have that few residual areas, often remained only by chance. This ecosystem degradation began with the early works of reclamation of the Adriatic coast, but in more recent times it had a large increase. In fact, the coastal building development, which was spontaneous, chaotic and deregulated, pushed the anthropic presence more and more close to the shoreline, destroying the sparse vegetation typical of the dunes and

¹ In this area the geological constraint is extended to almost 50% of its surface. The archeological sites are significant in the municipalities of Campomarino Guglionesi, San Giacomo degli Schiavoni and San Martino in Pensilis and the tracks involving the municipalities of San Giacomo and San Martino.

leveling the dunes themselves for their own purposes. All along the coast, therefore, there is an increase in number and size of urban areas. This phenomenon is particularly concentrated around the town of Termoli (already in the 90s, there was a consistency of urban areas equal to 10 times that of forty years earlier). The analysis carried out for the definition of the land use (Figure 4) bring out the clear vocation to agricultural production: in particular, land valley and irrigated areas along the hillside are considered as exceptional value, both for their geo-pedological asset and for their cultural attitudes (Cialdea *et al.* 2010a).

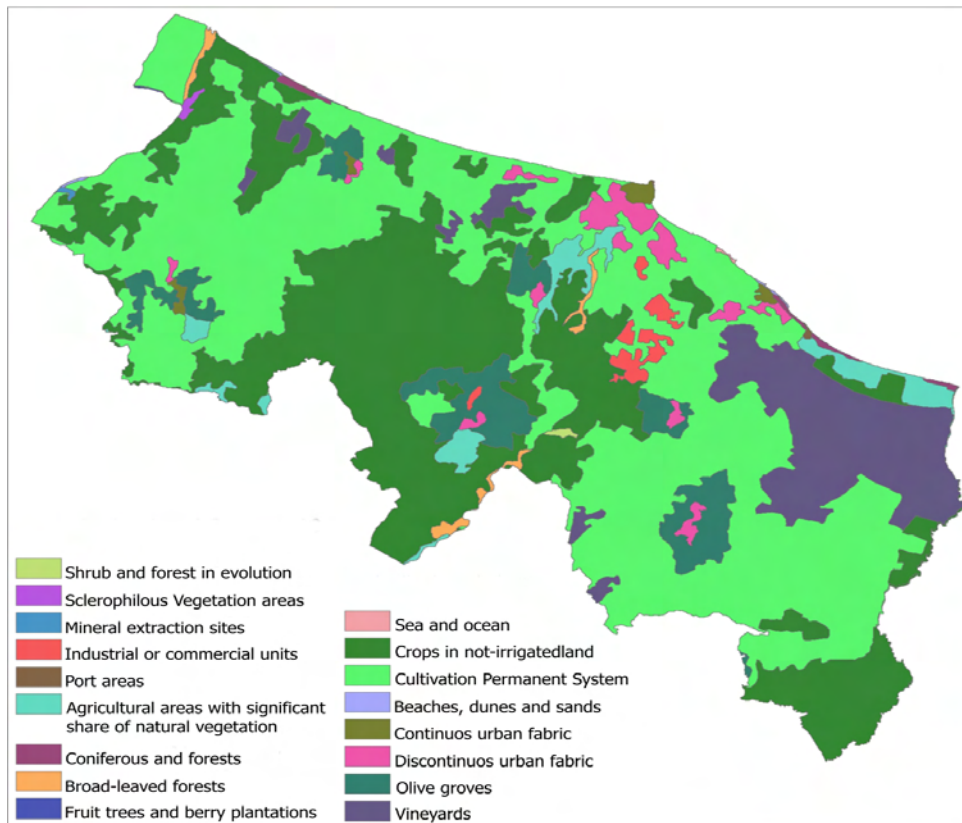


Fig. 4 Land use analysis in the coastal area

Areas along the Biferno and Trigno Rivers, and in general all coastal areas, are considered by the plan of exceptional natural interest: there are, in fact, areas that were then proposed as Sites of Community Importance, reflecting the presence of flora and fauna as important to highlight the need to protect their biodiversity. These are: the dune habitat in Campomarino, rare flora in the coastal area near the Saccione River; the wetland biotope in the district of Salcete in Guglionesi on the left side of the Biferno River; the habitat suitable for aquatic species along the Tamburro River (it is currently the only wetland remaining in the stretch from the Liscione dam to the Biferno's mouth) which is characterized by the presence of holm-oak Mediterranean forests. Worth less, but similarly important elements in this area, are the coastal wetland typical of the Mediterranean basin located near the mouth of the Biferno River- and therefore in an area subject to intense human activity - and the forest named Fantine in Campomarino, currently extremely devastated by the presence of activities, including a dump, but potentially recoverable thanks to the remains of holm oak survivors. Moreover, in the actual Landscape Plan, there are different areas characterized by the visual interest such as peak lines and hilly performances. It is necessary to underline the exceptional importance of the so-called headland of Campomarino, that put Campomarino in a panoramic location.

Elements of geological hazard have been identified in Petacciato landslides, in Montenero di Bisaccia and Guglionesi landfall and also in Montenero di Bisaccia along the right side of the Trigno River. In essence, the coastal zone is certainly the part of the region with the major transformations, in the area which is also highly exposed to anthropogenic pressures, especially those linked to the increase in tourism. Of course, also the creation of reservoirs and the abundant mining activity contributed to the actual condition of the landscape feature, particularly in the coastal area, where the already mentioned urbanization occurred rapidly and without effective checks both for the settlement of industrial settlement and for urban increase.

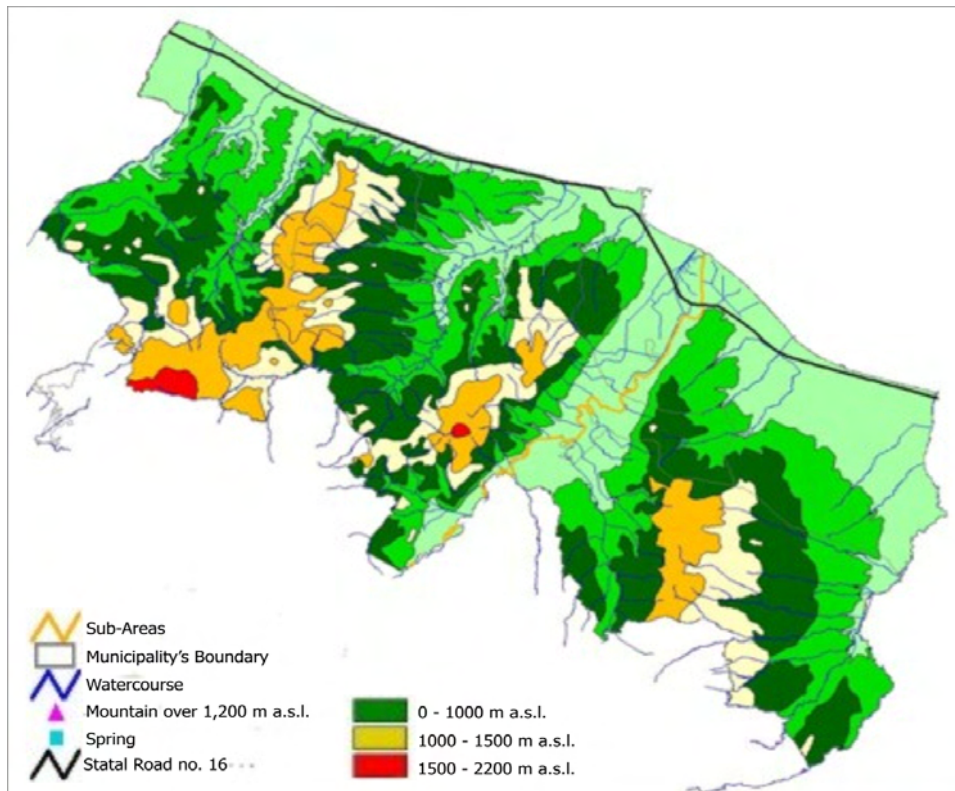


Fig. 5 Landscape visual analysis in the coastal area

However figure 5 describe our interpretation of the landscape in this zone: the coastal area could be divided into two sub-areas. The demarcation is essentially signed by the Biferno River. In its right side there is the area with the higher soil fertility and where farming activity is more developed, also as a result of the past land reclamation. In the left side of the Biferno River there are the greater phenomena related to the human activity, to the expansion of the urban area of Termoli and especially to the presence of the industrial area.

4 THE PRODUCTION SYSTEM OF THE COASTAL AREA

This study area has a clear condition for development and economic diversification with respect to the regional framework .

Industrial activities and services play an important role in the town of Termoli. This condition is significant also in the industrial Map of Italian Localism (CENSIS 1982). In the industrial area of Termoli, that reaches the top of specialization with the participation of the mechanical industry, diversification of production grew up in the direction of agro-food and chemical industries. Starting in '60's, there was a significant increase in

local units of industry and services. In 1961 there were just 1,681 local units, while in 2010, local units amount to about 50 000. Really there are significant differences between different National Census. In fact, over the past few decades the increase of local units had a lower intensity compared to the period 1971-1991. The result is, therefore, a framework that emphasizes a clear outsourcing of the production system.

At the local level, the positive trend has mainly affected Termoli and more lightly Montenero di Bisaccia and Campomarino. In 2011, tourism has a consistency of 180 structures, with a high prevalence of complementary ones (150 units) compared to the hotels. The accommodation capacity is 4,791 guests: the hotel facilities offer 1,881 beds. Complementary exercises, however, are more receptive availability (2,910 beds). In relation to the hotels, data referring to 1998-2011 reveal a clear increase in the number of beds (+530 units). The extra-hotel capacity, however, showed a steady decrease in the number of beds in the villages and camps, while the consistency of the tourist and hotel residences increase and facilities so-called environmentally friendly (cottages, B & B) consolidate. In 2000, farms amounts to little more than 6,000 units, while the SAT and the UAA amounted respectively to 37 708 hectares and 35,909 hectares. The average farm size is relatively small (a little over 7 hectares). The impact resulted from the agricultural area close to 95% of the Total farms land.

In 2000, farms amounts to little more than 6,000 units, while the Total farms Land and the Agricultural Land amounted respectively to 37,708 hectares and 35,909 hectares. The average farm size is relatively small (a little over 7 hectares). The impact resulted from the agricultural area close to 95% of the Total farms land.

Agriculture suffers a drastic restructuring and tends to specialization and intensification. Between 1950 and 2010, the farms number increased slightly, except in Montecilfone, Petacciato and San Giacomo. In contrast, the Total farms Land and the Agricultural Land is greatly reduced in each Municipality, except in Campomarino Montenero di Bisaccia and San Martino in Pensilis. Consequently, the average size corporate decreased significantly. This condition is to be read in relation to the actions of land reclamation.

The land structure does not detect phenomena of sputtering but since the 90s in almost all areas there were a decline in the share of the Agricultural Land of farms with over 50 hectares.

Irrigation played a very important role for the development of this area, where rainfall is scarce and poorly distributed over the course of the agricultural year. Irrigation developed in the 80s, thanks to the use of water resources of the Guardialfiera Lake, which has a usable capacity of about 137 million cubic meters of water. In 2010, irrigated areas totals more than 5,000 hectares and affect significantly all the municipalities in the area: it is a phenomenon that must be carefully assessed in terms of farming but also the environmental impact (Forleo *et al.* 2011). Data relating to farms indicate a widespread presence and extensive use of irrigation. More than half of farms use irrigation for a coverage of more than 70% of their irrigable area. The percentage of irrigated area in the total Agricultural Land takes significant values in Campomarino, Guglionesi, Petacciato, Portocannone and Termoli. Irrigation affects mainly horticultural crops, industrial plants (sugar beet) and fruit trees. Great importance have dynamics of the production structure of the area: in 2010, the production scenario appears to be more varied than in the 50s. Data reveal, however, a clear decrease of arable land and permanent grassland. In contrast, permanent crops showed a significant increase. Moreover the forest increase appears smaller. The weight of the arable land unchanged, the incidence of meadows and pastures reduced, while there is a significant increase in permanent crops. The so-called "other land" almost disappeared. With particular reference to wine production, it is appropriate to emphasize the special vocation of agriculture in the area and the importance of the production of DOC and DOCG area.

The livestock farming is marginal in the context of this area, although in recent years there were a slight increase in the number of farms in Campomarino, San Martino in Pensilis and Petacciato.

The spread of organic farming in the study area is relatively low: farms that adopted organic production amounted to just 108 units (Molise Region, Department of Agriculture 2008). The Total farms Biological Land is 512.35 hectares, while the Agricultural Biological Land covers an area of 291.68 hectares.

At the municipal level, the analysis shows that Petacciato is the Municipality with the majority of biological land, which represents the 44.2% in terms of Agricultural Land and 49.8% in terms of Total farms Land.

In Guglionesi the biological surface amounts to 91.49 hectares and 74.38 hectares of Agricultural Land (25.5% of Agricultural Land and 17.9% of Total farms Land). In Campomarino the Total farms Land and the Agricultural biological Land amounted to, respectively, 29.89 and 18.6 hectares. In Termoli, the Total farms Land and the Agricultural Land correspond, respectively, to 6.01 and 3.94 hectares (1.4% of the Total Agricultural Land and 1.2% of the total farms land). The result is a framework that emphasizes a clear process of specialization and intensification of agriculture, which created environmental problems and simplification of the landscape.

The study area has a clear interconnection between production specialization and Municipalities in which there is a greater concentration of employment levels. Employment grew significantly only in the last thirty years. The occupational structure undergoes a profound change. Since the 60s there is, in fact, a progressive reduction of the employed in agriculture and consequently employment growth in industry and services. In percentage terms, the weight of the labor force in agriculture, which in the past was the most consistent activity, down from 59% in 1961 to just over 8% in 2010, compared to an increase in industry (from 23% to 37%) and services (from 17% to 54%). The agricultural sector was, therefore, a sort of reservoir for industrial activities and more recently also for the tertiary sector. The last period is characterized by a much lower decline of assets in agriculture, by a gradual increase in the industrial sector and a persistent increase in the services sector. In any case, about 90% of the workforce that supports industrial activities comes from the agricultural sector.

The disaggregated analysis within Municipalities, highlights how the evolution of the employed in the reporting period was substantially different. With the exception of Termoli, which has seen a sharp increase in employment (+60%), the remaining municipalities have suffered a consistent decrease.

Profound changes occurred: if in 1971 it was still possible to identify Municipalities with workers in agriculture that exceeded the 50% (Campomarino, Guglionesi, Montecilfone, Montenero di Bisaccia, Petacciato, San Giacomo degli Schiavoni), already in 1991, no one Municipality exceed this threshold.

Termoli absorbed 90 % of the increase in industrial employment, while, as regards tertiary activities, all Municipalities registered, an increase in the number of workers. In 2010, agriculture employers are eloquently in Montecilfone (18%), while in Termoli are less than 5% of the labor force. The working units in the industrial sector have an important place in Montenero di Bisaccia (47% of the total), while those employed in the services sector showed a significant consistency in Termoli and San Giacomo degli Schiavoni (respectively 60% and 57%).

The scenario described, on the one hand, defines this district as the so-called "strong areas"; on the other hand it highlights how significant changes undergone in the economic structure, that is in a phase of consolidation.

5 CONCLUSION

The analysis of renewable energy installations highlights how the area most affected, especially from wind farms is the right Biferno hills. This area, as previously described, is higher fertile and characterized by greater agricultural activity. Moreover the Landscape Plan no.1 highlights that these areas are characterized

by a high production value²: they are the low hills of Molise between the territory of San Martino in Pensilis, Ururi and Rotello.

On the other hand, these areas possess significant or even higher visual interest, always in accordance with the plan, which described these hill areas such natural formations soil of visual elevated value³. Moreover photovoltaic systems have been installed, for the most part, on agricultural land which is of elevated agricultural production value.

Within the general framework of the Region, the study area is the most devoted to the tourism industry and its coastal location, at the same time, it is also one in which the major intensive agriculture activity is concentrated, thanks to favorable climatic conditions and good availability irrigation in addition to the presence of some valuable productions, including the biological ones.

This area is an example of Italian Localism, but the economic dynamics have not been able to consolidate relations between Municipalities, nor to interact with the regional productive fabric.

Moreover, the production of energy from renewable sources is a national priority as it increases the security of energy supply, promotes employment and helps to reduce the environmental impact associated with the energy cycle, but of course the plants planning must necessary take into account the characteristics of the territory, specifically in relation to he impact on productive activities that are predominant in it.

REFERENCES

- Argiolas, A., Cannata, G. (1989), "Molise", in Cannata G. (ed.), *I sistemi agricoli territoriali italiani*, FrancoAngeli, Milano.
- Cannata, G., Forleo, M. (eds.) (1998), *I sistemi agricoli territoriali delle regioni italiane*, CNR PF RAISA, Arti grafiche La Regione, Campobasso.
- Cannata, G. (ed.) (1989), *I sistemi agricoli territoriali italiani*, CNR PF IPRA, FrancoAngeli, Milano.
- Censis (1982), "Gli effetti di impulso dell'industrializzazione importata: il caso di Termoli", in AAVV, *Rapporto 1982 sullo stato delle economie locali. Scenario del localismo italiano*, FrancoAngeli, Milano.
- Cialdea, D., De Montis, A., Vitiello, M., Saio, G. (2006), "The GIS Architecture Elements for the Coastal Areas along the Adriatic Sea", in *Proceedings 46th Congress of the European Regional Science Association (ERSA)*, August 30th – September 3rd, Volos, Greece. Paper in CD allegato a Atti Theme D Geographical information systems and spatial analysis.
- Cialdea, D. (2007), "The study of Adriatic coastal areas: valorisation hypothesis for sustainable development", in *Proceedings 13th National Meeting of APDR*, University of Azores, Angra do Heroísmo, Azores, Portugal, 5 to 7 July, 1st Congress of Nature Management Conservation Portuguese.
- Cialdea, D., Privitera, S. (2007), "The state of the environment on the Adriatic coast: elements of value and conflict", in *Proceedings of the 13th National Meeting of APDR*, University of Azores, Angra do Heroísmo, Azores.
- Cialdea, D. (2009), "Valorizations strategies for Archaeological Sites and Settings of Environmental Value: Lessons from the Adriatic Coas", in Nijkamp P., Fusco Girard L. (eds.), *Tourism: Towards an operational framework for policy and planning*, vol. 1, Ashgate, 181-200.
- Cialdea, D., Sollazzo, A. (2010), "Dinamiche evolutive del paesaggio suburbano costiero del Molise", *Architettura del Paesaggio*, 5 – Paysage.
- Cialdea, D., Maccarone, A., Sollazzo, A. (2010), "Wind energy and landscape in Molise. Legislation, Incentives and Problems", in *Proceedings of the International Conference on Renewable Energies and Power Quality (ICREPQ'10)*, Granada (Spain), 23rd to 25th March, 2010. Granada (Spagna), 23-25 Marzo 2010, vol. Paper n. 493, Pubblicato su web www.icrepq.com e su CD.

² Technical Standards of Landscape Plan no. 1, Art. 7 Elements of agricultural production interest due to natural characteristics value.

³ Technical Standards of Landscape Plan no. 1, Art. 8 Elements of visual landscape interest.

Fanelli, R. (1998), "Molise", in Cannata G., Forleo M. (eds.), *I sistemi agricoli territoriali delle regioni italiane*, CNR PF RAISA, Arti grafiche La Regione, Campobasso.

Forleo, M., Giaccio, V., Mastronardi, L. (2011), "L'Agricoltura nel sistema socioeconomico territoriale del Basso Molise", in Carrabba et al. (eds.), *Il Progetto DINAMO per la Biodiversità del Molise*, ENEA, Roma.

OECD (1994), *Creating Rural Indicators for Shaping Territorial Policies*, Paris.

Pistacchio, P. (2008), "Verso una metodologia di zonizzazione del territorio regionale", in Bagarani M. (ed.), *Letture dello sviluppo rurale*, FrancoAngeli, Milano.

Regione Molise Assessorato Agricoltura, Foreste e Pesca produttiva (2008), *Stima dell'agricoltura biologica in Molise*, Campobasso.

Regione Molise (2007), *Piano di Sviluppo Rurale del Molise*, Campobasso.

IMAGES SOURCES

Fig. 1: ISTAT Data with reference to 2011 year, our elaboration.

Fig. 2: Molise Region, Regional Rural Development Plan 2007.

Fig. 3: DTM Molise Region, investigation on present plants ARPA Molise Region, our elaboration.

Fig. 4: Corine Land Cover 2006, our elaboration.

Fig. 5: Molise Region Vegetation Map, our elaboration.

AUTHORS' PROFILE

Donatella Cialdea

Full Professor (Urban Planning) at the University of Molise since 1988. Actually she is a President of the Civil Engineering Course, already Dean of the Faculty of Engineering from 2009 to 2012. She is the Director of the Laboratory L.A.Co.S.T.A. (Laboratory for activities relating to the Territorial Development and Environment) at the University of Molise in order to prepare students and operators in the Geographical Information Systems field). She is the Coordinator of the PhD Course in "Landscape Analysis and Valorisation" at the University of Molise, based consortium with the University of Sassari, from the cycle XX. She was the Scientific Coordinator of the International Master Level I Pro.D.U.C.T.I.V.E. Coast (Proposal for the Development of Urban and Coastal Territory in relation to the Value of the Environment), aimed at the technical-scientific training of a specific professional figure - the Selective Interpreter of Territorial Data).

Luigi Mastronardi

Professor of "Environmental Economics" in the Department of Biosciences and Territory, University of Molise (Italy). He is graduated in Economic and Social Sciences in with specialization in Agro-Business Economics. He has achieved the PhD in Agricultural Economics and Policy. Main areas of scientific interest include sustainable tourism regarding agri-tourism and rural tourism, agricultural economics (rural policy, organic farming, agricultural landscapes, short food supply chain) and environmental economics (protected areas, sustainable rural development, environmental policy, rural development analysis regarding public expenditure).